



NEURODIVERSITY INCLUSION TRAINING

Unlocking neurodiverse talent
within the workplace





Unlocking neurodiverse talent within the workplace

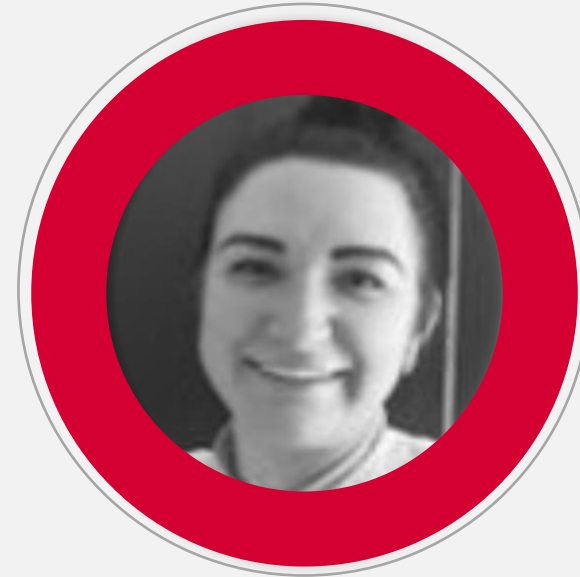
- ① An introduction to auticon
- ① An overview of neurodiversity, autistic strengths and the workplace experience
- ① auticon recruitment - a different perspective
- ① Summary and discussion



Introductions



Maria Hamilton
International Training Programme Lead



Amber Canham
Recruitment Lead

About auticon: our mission

- ◉ A social enterprise providing IT consulting in the fields of data analytics, cybersecurity and quality assurance
- ◉ Founded in 2011 with a mission of to promote neurodiversity and improve the employment prospects of adults on the autism spectrum
- ◉ Global reach with international offices 
- ◉ 200 autistic employees on permanent contracts
- ◉ Our experience in neurodiversity as well as hiring, training and creating neurodiverse inclusive work environments has enabled us to develop our neurodiversity inclusion service



About auticon: our goal

- Providing high quality careers for skilled autistic adults with STEM related backgrounds
- Shifting perceptions and improving awareness of autism and neurodivergent conditions
- A catalyst to encourage neurodiversity within the workplace

UK Impact - auticon consultants

Diagnosis	Employment	Education	Age range
<ul style="list-style-type: none">• 100% autistic• Many with additional co-occurring conditions such as ADHD, Dyslexia and Dyspraxia	<ul style="list-style-type: none">• 24% in employment prior to auticon• 4% employed in relevant role to their skill and education prior to auticon	<ul style="list-style-type: none">• 95% of have a STEM degree• 50% postgraduate degree• 15% PhD	<ul style="list-style-type: none">• 24-61 years old



Combining autistic talent & technical skills

Our consultants have superior cognitive abilities that give them a competitive advantage in the areas we specialise in.

Data Analytics



Insurance

Business Intelligence & Reporting



Consumer Goods

Predictive Analytics



Accounting

Data Visualisation & Machine Learning



Automation

Functional Testing



Information

Test Case Review & Root Cause Analysis



Pharmaceutical

Data Quality Validation

Software Development



Banking

Migration & Replatforming



Legal

Digitalisation & Automation



Automotive

Stabilisation & Modernisation



Accounting

DevSecOps



Aviation & Aerospace

Threat Assessment & Continuous Monitoring

Cybersecurity



Education Services

AWARENESS

Autism and neurodiversity awareness at work

FOUNDATION

**Neurodiversity and autism
within the workplace**

FOUNDATION

**ADHD, Dyslexia and Dyspraxia
within the Workplace**

ADVANCED

**Supporting the disclosure
of neurodiverse conditions**

ADVANCED

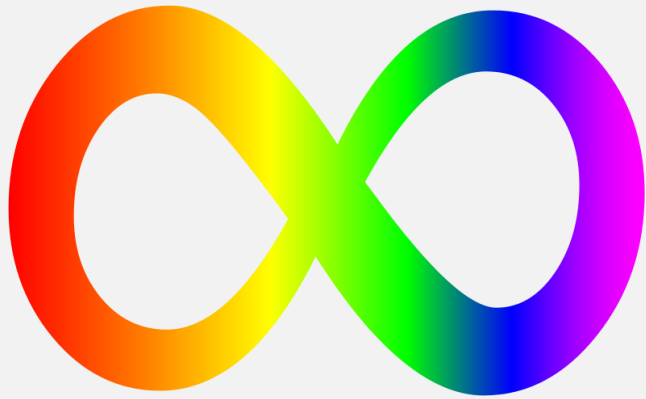
Workplace assessment

ADVANCED

Inclusive communication

ADVANCED

**Recruiting
neurodivergent talent**



An overview of neurodiversity and neurodivergence within the workplace



Understanding neurodiversity



- ① **NEURODIVERSITY / NEURODIVERSE**
How **all** brains are different; we all think differently and have differing cognitive abilities
- ① **NEURODIVERGENT / NEURODIVERGENCE**
A specific neurodevelopmental condition/s which relate to differences how the brains are structured or wired (i.e. Autism, ADHD, Dyslexia, Dyspraxia)
- ① **CONDITION or DISORDER**
disorder – is overly medicalised and adheres to a deficit-based model of disability
condition – is (for most) seen as a more respectful term
- ① **CORRECT TERMINOLOGY –**
Neurotypical is often used. Instead consider using....not neurodivergent; not autistic, does not have [*autism*]
Use identity first language as generally preferred. Sarah is autistic, not Sarah has autism

Neurodivergent conditions



- Autism Spectrum Condition
- ADHD/ADD
- Dyslexia
- Dyspraxia

Diagnosis rate of 1 in 7/ (15%)

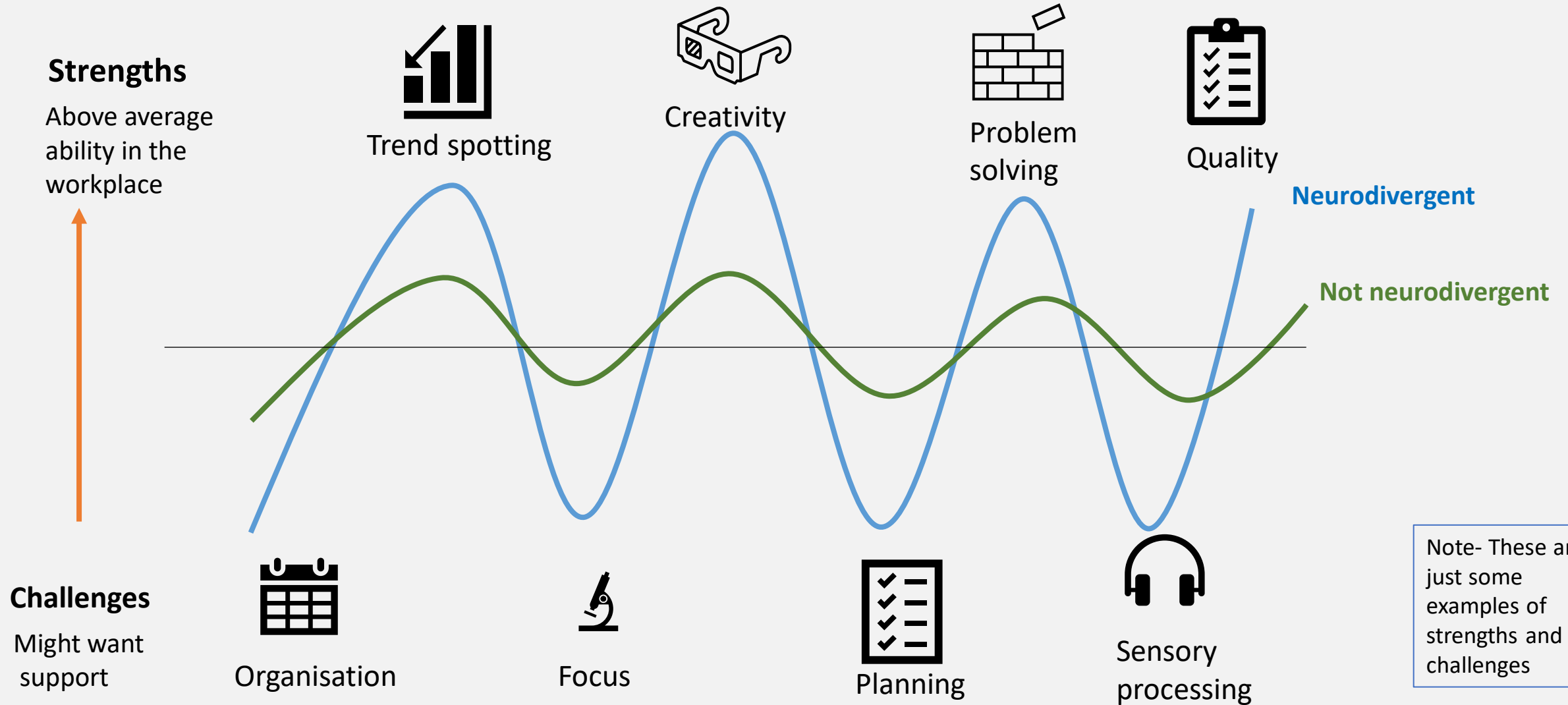
Individuals can have co-occurring neurodivergent conditions such as ADHD, Dyslexia and Dyspraxia

“If you’ve met one person with autism, you’ve met one person with autism.”



- **Stephen Shore**
autistic author, speaker and thought leader

Understanding the cognitive profile of neurodivergent individuals



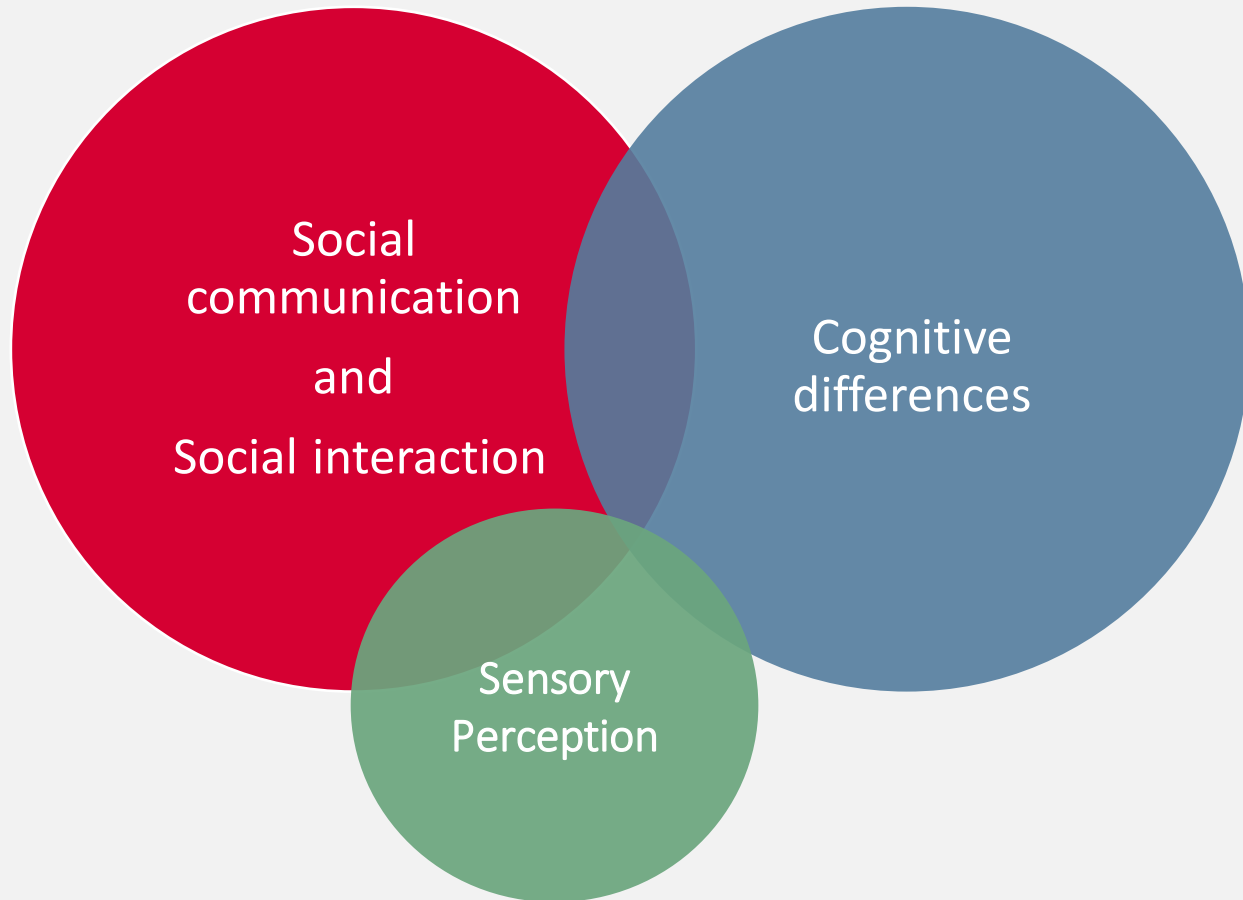
An overview of autism, strengths and the workplace



Understanding Autism Spectrum Condition



Autism is a life long neuro-developmental condition which impacts how an individual experiences and interacts with the world and other people:



Statistics

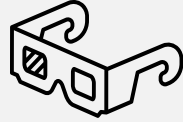
Estimated 1 in 100 people are autistic
700,000 (UK)

Diagnosis: 3:1 Male to female

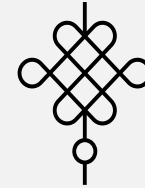
Cognitive strengths- examples



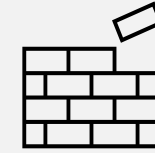
HONESTY



**SEE THINGS
DIFFERENTLY**



CREATIVITY



**PROBLEM
SOLVING**



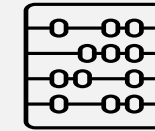
**ANALYTICAL
THINKING**



ACCURACY



**PATTERN
RECOGNITION**



**FACTUAL
MINDSET**



**INNOVATIVE
THINKING**



QUALITY



**TREND
SPOTTING**



**RETAINING
INFORMATION**

Workplace challenges

A spectrum condition



By Fredy Gasser, Die Post
Photo copyright Urs Graber

*Beat Steiner
Consultant
Switzerland*



Why we need neurodiverse teams in the workplace



Tom Cowley
auticon UK
Consultant

- Case studies show increased productivity and innovation in teams
- Adjustments helps the client team not just our consultant
- Skills shortage and recruitment challenges
- Untapped talent – autistic FTE is just 16%

“I like to feel useful. Society is made up of people who make something bigger than themselves. And that means work. That means being able to contribute to a shared idea.”

Customer praise



“It was great working with auticon. They took the time to understand us as an organization and what we were trying to achieve. They really get that there isn’t a one-size-fits-all approach and took us through what could be changed now and what we could think about in the future.”

- **Yorath Turner Chartered FCIPD** |
Head of Digital Capability & Talent



Scottish Government
Riaghaltas na h-Alba
gov.scot

“Our experience with auticon has been that any adjustments we need to make are far outweighed by the extraordinary abilities and skills they bring to the firm.”

- **Owen Clay, Partner**



Within the first week they were able to surpass the average amount of processed test cases of 125 per day by almost 50%. We’re more than content with the auticon consultant’s pace and quality of work.”

- **Rainer Degenhardt, Program Manager**



Deutsche Bank



BOSCH



ST. JAMES'S PLACE
WEALTH MANAGEMENT





auticon

WE'RE HIRING



auticon

**Another
Perspective**

Come and join our team

auticon



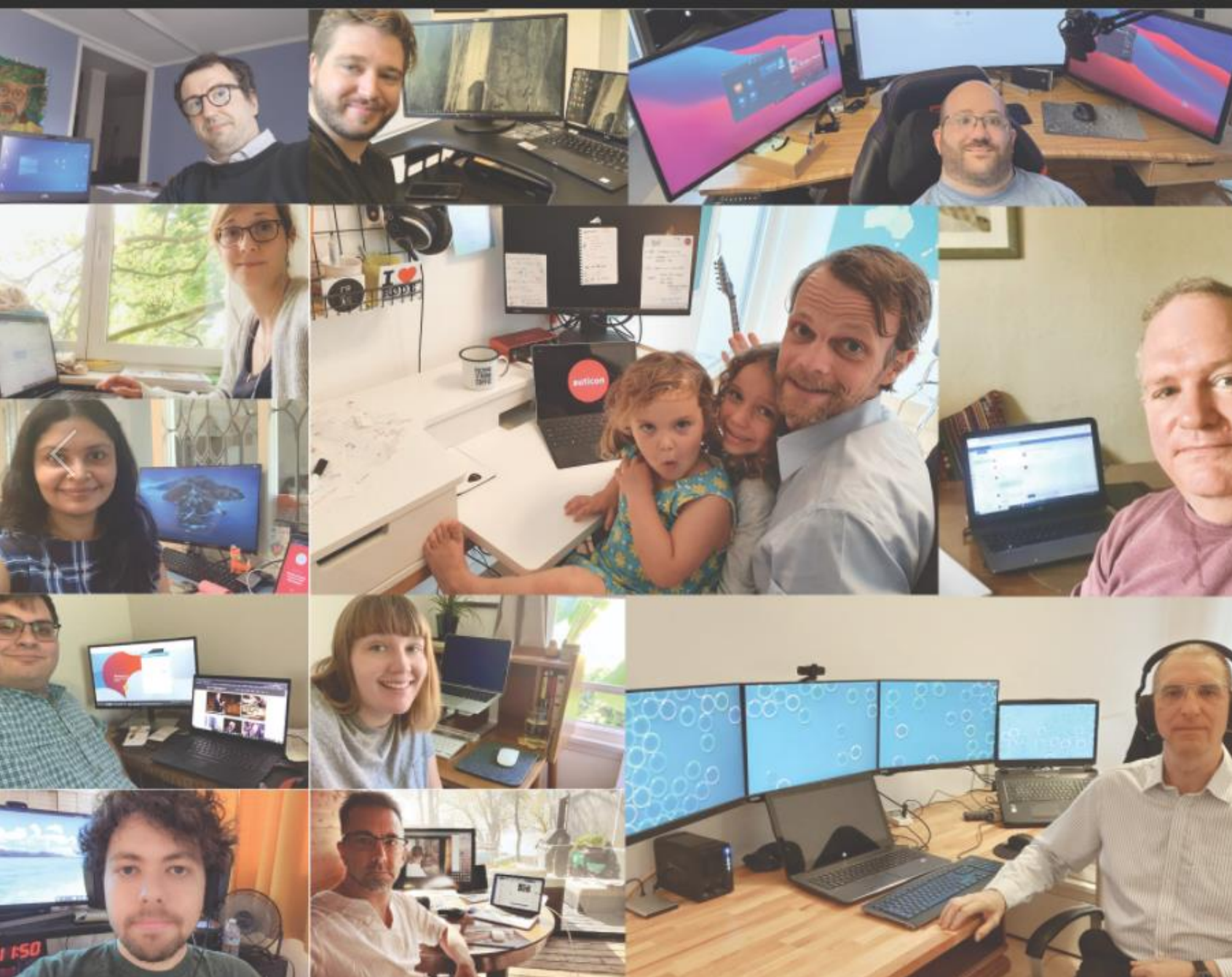
Permanent employment as an IT consultant or data consultant.

- Continuous employment based in London, Edinburgh and Dublin
- Professional development
- Fascinating and complex projects
- Autism-positive work environment



What are we looking for ?

- Have studied towards a STEM subject or social science subject
- More than one year of relevant professional experience
- At least one modern commercial programming language
- Diagnosis of autism



Our work culture

Celebrating individual difference, working as a team

Our values

- People first and team spirit
- Individual difference is valued
- Open and transparent in our communications

auticon consultant support model



Job Coach



Consultant

- Brief, prepare, support and mediate

Support covers:

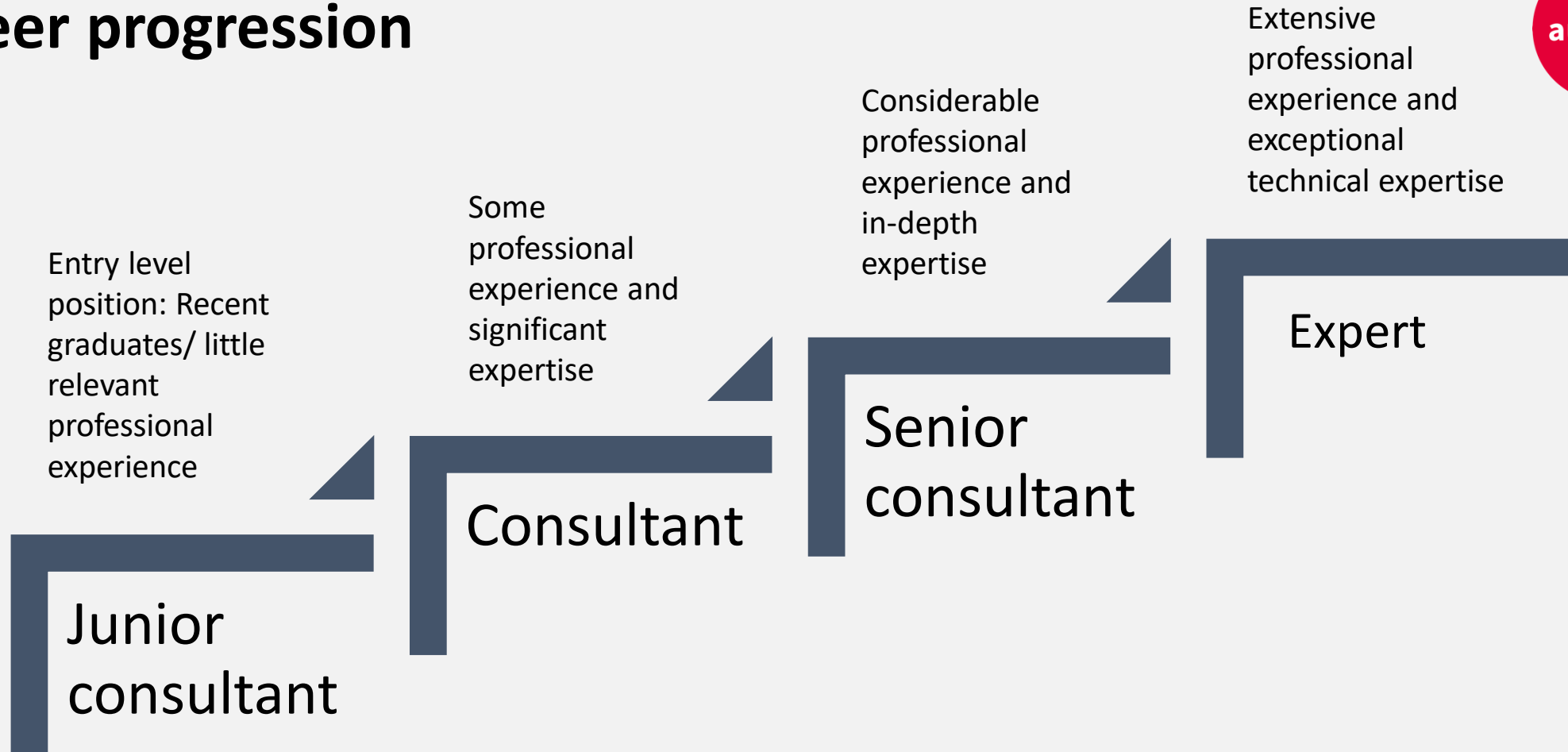
- Social communication
- The sensory environment
- Mental wellbeing
- Structure & routines
- Workplace adjustments



Line manager

- Technical Support
- Manages work tasks

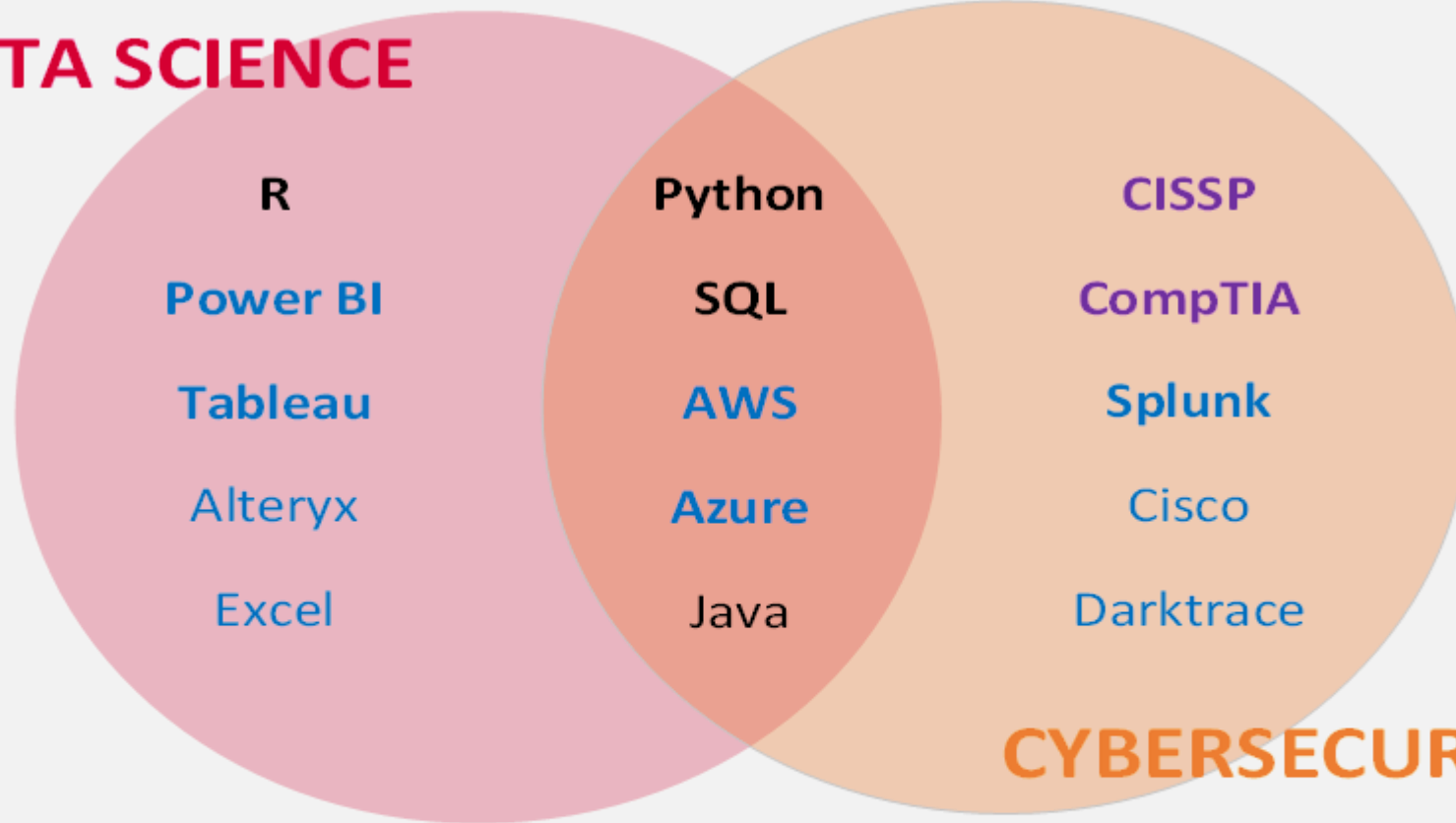
Career progression



Technical skills sought

auticon

DATA SCIENCE



Technology

Proprietary

Certification

Of Particular Interest: { AI | ML | NLP | Pandas | Tensorflow | etc }

Nice to See: { [Git](#) | [Certified Ethical Hacker](#) | Linux (Kali) | etc }

Cognitive skills sought



Pattern
recognition



Attention to
detail



Sustained
concentration



Logical
analysis



Error
detection

How to apply

← Job Openings

Data Scientists | Data Analysts | Data Engineers in the Edinburgh and Glasgow area

Consultant (Edinburgh) · Edinburgh, Edinburgh, City of

We are expanding our data science practice in Edinburgh and Glasgow (Scotland) and are looking for data scientists, data analysts, and data engineers to join our team.

Please apply if you have previously worked in any of these data-related areas. And, if you haven't, please contact us anyway if you have good numeracy skills and meet at least three of these four criteria:

- Fluency in Python or R
- Experience in the use of data analysis tools
- Ability to process large data sets accurately
- Experience in the use of relational databases

Additionally, it would be nice, but not necessary, if you have:

- Previously used Tableau, Power BI, Qlikview, Spotfire, etc.

Apply for This Job

Link to this job

<https://auticon.bamboohr.com/jobs/vie>



Location

Edinburgh, Edinburgh, City of

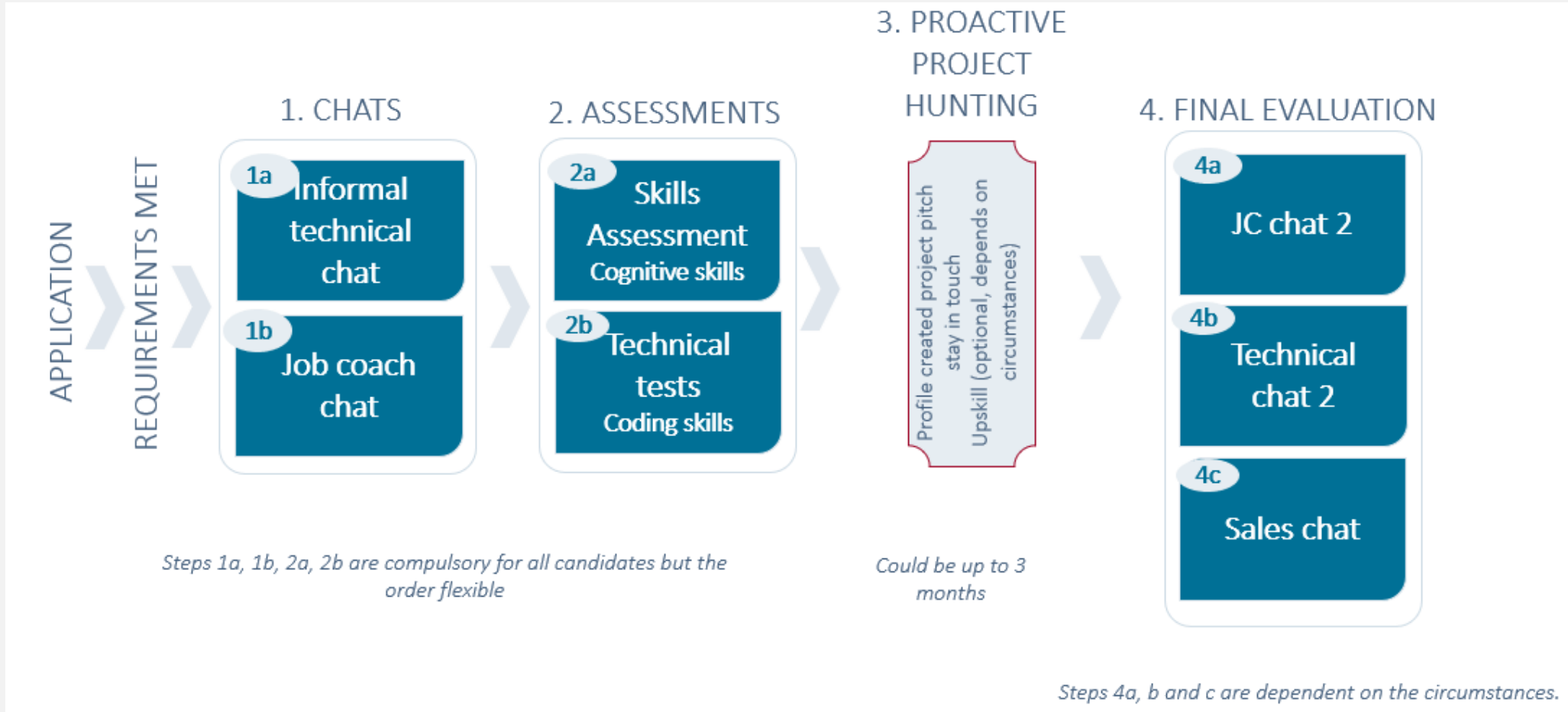
Department

Consultant (Edinburgh)

Employment Type

Full-Time

Recruitment Journey



What our consultants say – onboarding

auticon



What our consultants say – projects

“

auticon spend a lot of time and effort making sure that a role is right for me before I get to meet the company. They also speak to the company about autism, me as an individual and how they can get the best out of me. I also have a weekly 1-1 with someone from auticon, who is hugely helpful. It is wonderful working for a company that acts as my advocate.

– Chris
auticon consultant



Hear from one of our consultants (<https://youtu.be/rrN4JpyB7xs>),



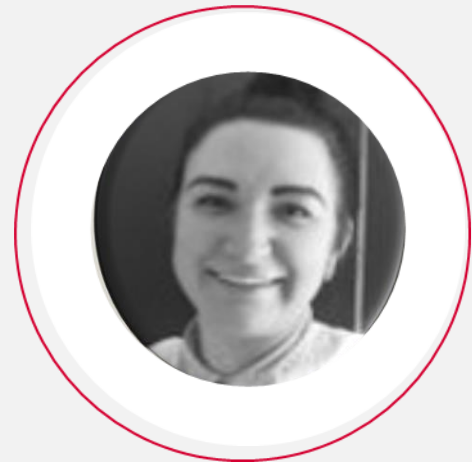
Contact us



Maria Hamilton

maria.hamilton@auticon.co.uk

For training and consultancy enquiries



Amber Canham

amber.canham@auticon.co.uk

For recruitment enquiries

Website - <https://auticon.co.uk/now-hiring/>

