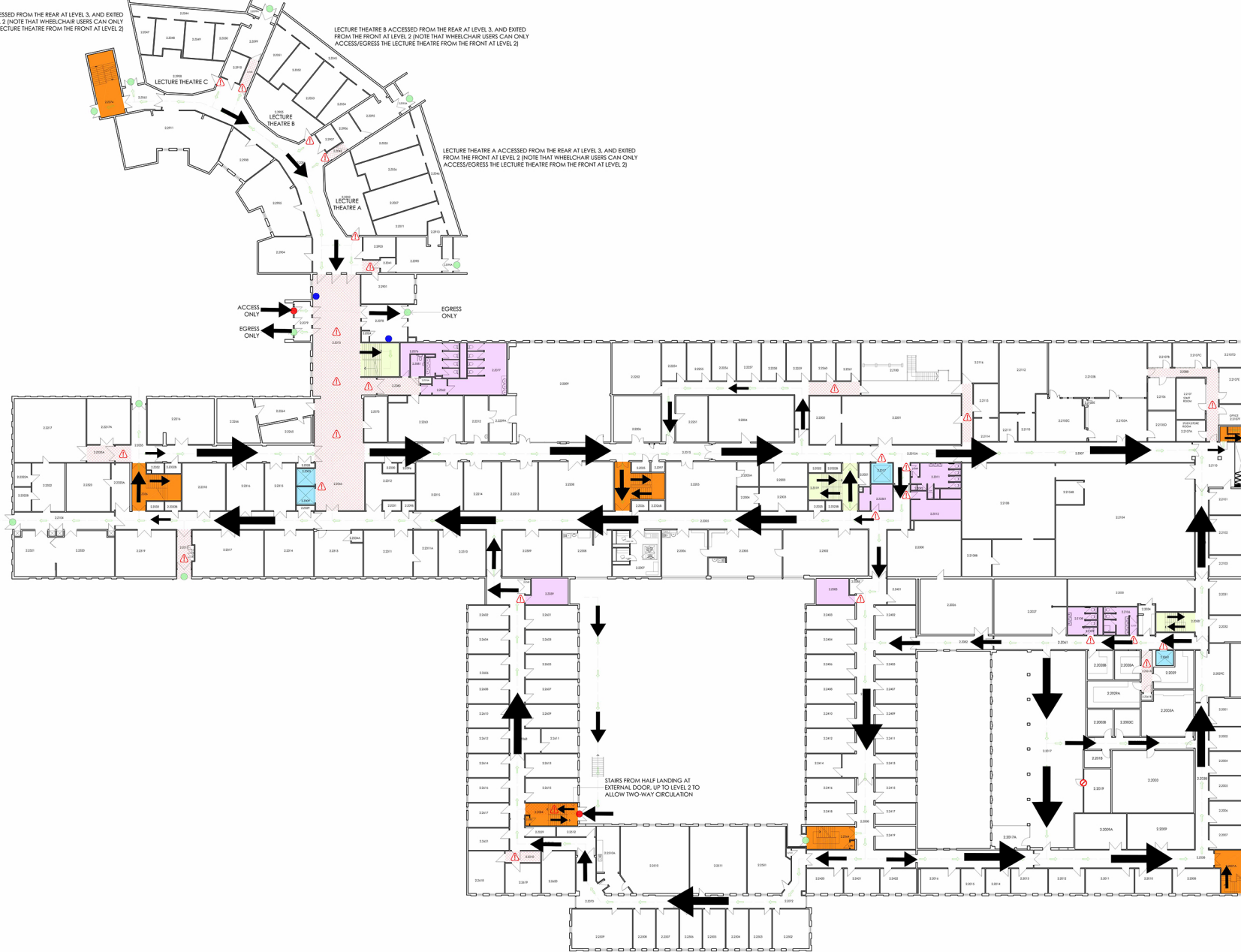


LECTURE THEATRE C: ACCESSED FROM THE REAR AT LEVEL 3, AND EXITED FROM THE FRONT AT LEVEL 2 (NOTE THAT WHEELCHAIR USERS CAN ONLY ACCESS/EGRESS THE LECTURE THEATRE FROM THE FRONT AT LEVEL 2)

LECTURE THEATRE B ACCESSED FROM THE REAR AT LEVEL 3, AND EXITED FROM THE FRONT AT LEVEL 2 (NOTE THAT WHEELCHAIR USERS CAN ONLY ACCESS/EGRESS THE LECTURE THEATRE FROM THE FRONT AT LEVEL 2)

LECTURE THEATRE A ACCESSED FROM THE REAR AT LEVEL 3, AND EXITED FROM THE FRONT AT LEVEL 2 (NOTE THAT WHEELCHAIR USERS CAN ONLY ACCESS/EGRESS THE LECTURE THEATRE FROM THE FRONT AT LEVEL 2)



LEVEL 2 LAYOUT

1:250 SCALE

NOTES

THIS LINE SHOULD MEASURE 100mm

- KEY:**
- Waiting entrance
 - Waiting shelter exit
 - Disabled door operation
 - Wheelchair ramps
 - Waiting Queue Area
 - Waiting Queue in Use
 - Lift
 - WC
 - Restricted access
 - Restricted Access
 - Lift Lobby
 - Lift Lobby
 - Lift Lobby
 - △ Trip risk in common areas
 - △ Trip risk in common areas
 - △ Trip risk in common areas

LAYOUT DRAWING

C	layout revised as per discussions with end users	26/06/20	JPC
B	layout revised as per over-marked drawings received from end users	25/06/20	JPC
A	Teaching Spaces in Use noted; 'KEY' updated and further notes added	13/05/20	JPC
Rev.	Details	Date	Initials



UNIVERSITY of EDINBURGH
ESTATES DEPARTMENT
SMALL PROJECTS and MINOR WORKS (Architectural)
9 INFRIMARY STREET, EDINBURGH, EH1 1NP
Tel: 0131 650 9157

Department
ESTATES DEPARTMENT

Project
COVID 19 - RECOVERY READINESS PLAN

Project Address
JAMES CLERK MAXWELL BUILDING, PETER GUTHRIE TAIT RD,
KING'S BUILDINGS, EDINBURGH, EH9 3FD

Drawn By
RECOVERY READINESS LAYOUTS
LEVEL 2 LAYOUT

Dwg No
A_/0613-002

Dwn By
J.P.COMPTON

Date
MAY 2020

Scale
1:250

Blot No
0613

Rev
C

A1