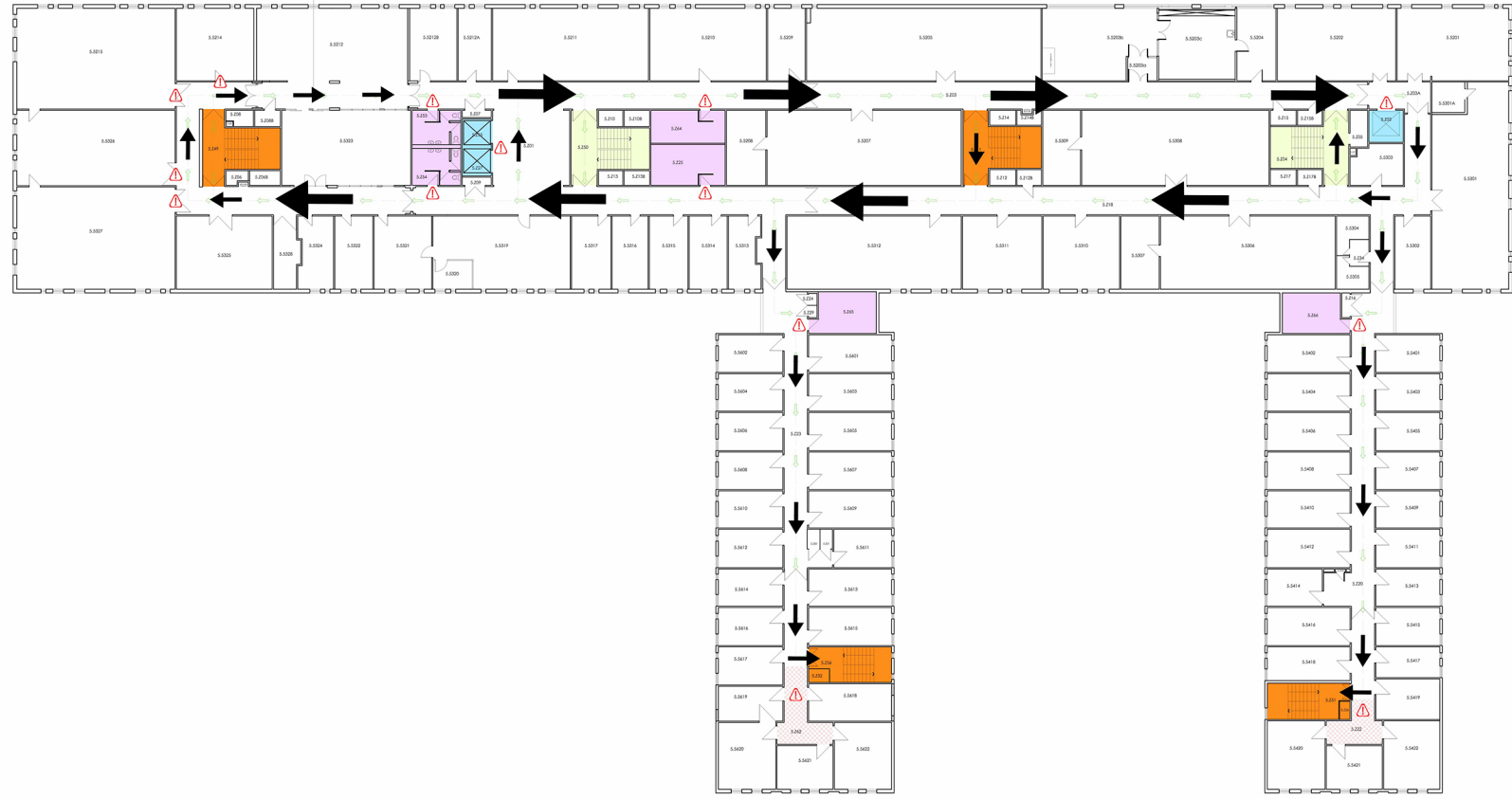


- KEY:**
- Safety entrance
 - Safety exit
 - Evacuation flow direction
 - Main entrance
 - Main entrance
 - Working space to fire
 - Lift
 - Lift
 - Lift
 - Restricted access
 - Lift Landing door
 - Access where space restrictions may be required to ensure full evacuation capacity
 - △ Stop use of common areas

ONE WAY SYSTEM CONTINUED THROUGH ROOM 5.5212. OTHERWISE STUDENTS/ STAFF ETC. WILL HAVE TO GO DOWN TWO FLOORS TO RE-ENTER THE ONE-WAY SYSTEM TO GAIN ACCESS TO THE OTHER END OF THE BUILDING WHEN ACCESSING ROOMS 5.5214/5.5215/5.5226/5.5227



LAYOUT DRAWING

Rev.	Details	Date	Initials
A	Layout revised as per over-marked drawings received from end users	25/06/20	JPC



UNIVERSITY of EDINBURGH
 ESTATES DEPARTMENT
 SMALL PROJECTS and MINOR WORKS (Architectural)
 9 INFIRMARY STREET, EDINBURGH, EH1 1NP
 Tel: 0131 650 9157

Department ESTATES DEPARTMENT	
Project COVID 19 - RECOVERY READINESS PLAN	
Project Address JAMES CLERK MAXWELL BUILDING, PETER GUTHRIE TAIT RD, KING'S BUILDINGS, EDINBURGH, EH9 3FD	
Dwg Title RECOVERY READINESS LAYOUTS LEVEL 5 LAYOUT	
Dwg By J.P.COMPTON	Date MAY 2020
Scale 1:200	Blk No 0613
Dwg No A/0613--/005	Rev A